



FIT



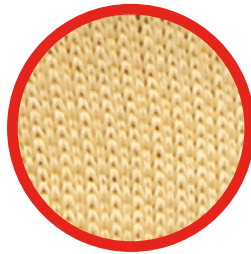
GRIP



DURABLE

M-GRIP

11-540



CHARACTERISTICS

- Latex crinkle coating on the palm and fingers
- Polyester/cotton liner (10 gauge)
- Elastic knitted wrist cuff
- Seamless glove
- Ventilated back keeps the hands cool under warm conditions
- Excellent wear resistance
- Robust yet supple glove
- Good grip under both dry and wet working conditions

Article number: 1.11.540.00

SUITABLE FOR ACTIVITIES IN E.G.

- Construction
- Scaffolding
- Industry
- Transport & logistics
- Road workers
- Agriculture

COLOUR

Green/yellow

SIZES

6/XS to 12/3XL incl.

PACKAGING

- 1 pair per polybag
- 12 pairs per bundle
- 144 pairs per outer box

EN388:2016



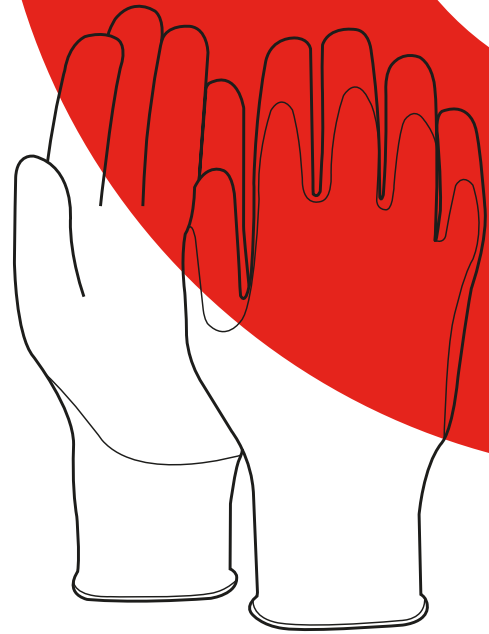
2142X



EN 420:2003+A1:2009

PRODUCT INFORMATION

SIZE	ARTICLE NO.	EAN CODE 1 PAIR (POLYBAG)	EAN CODE 12 PAIRS (BUNDLE)	EAN CODE 144 PAIRS (OUTER BOX)
6/XS	1.11.540.06	8718249059667	8718249059674	8718249059681
7/S	1.11.540.07	8718249003301	8718249003318	8718249003325
8/M	1.11.540.08	8718249003332	8718249003349	8718249003356
9/L	1.11.540.09	8718249003363	8718249003370	8718249003387
10/XL	1.11.540.10	8718249003394	8718249003400	8718249003417
11/XXL	1.11.540.11	8718249003424	8718249003431	8718249003448
12/3XL	1.11.540.12	8718249061523	8718249061530	8718249061547



COLOUR BINDING/OVERLOCKING

Sizes	6/XS	7/S	8/M	9/L	10/XL	11/XXL	12/3XL
Colour binding/overlocking	red	yellow	green	blue	grey	black	orange

CLARIFICATION OF PICTOGRAMS

EN388:2016



2142X

EN388:2016



abcdef

Protection against mechanical hazards

- A = Scuff resistance (0-4)
- B = Cut resistance (0-5)
- C = Tear resistance (0-4)
- D = Puncture resistance (0-4)
- E = Cut resistance (in accordance with EN ISO 13977 (A to F))
- F = Impact resistance (optional) (P = Passed)

Note: X = untested or not applicable

STORAGE CONDITIONS

The gloves should be kept in a clean, cool and dry place and not kept compressed in their original packaging. Do not expose the gloves to direct sunlight. Make sure that the packaging and the gloves are not damaged during shipping.

TESTING INSTITUTE

These gloves are certified by: CTC (Notified Body no. 0075), 4 Rue Hermann Frenkel 69367 Lyon, Cedex 07, France.

DECLARATION OF CONFORMITY

For a copy of the declaration of conformity, we refer you to the following link: www.oxxa-safety.com/doc

RELATED PRODUCTS



MAXX-GRIP-LITE 50-245

Art. no. 1.50.245.00



COLD-GRIP 47-180

Art. no. 1.47.180.00

YOUR SUPPLIER: